

15 | NX



NX 200t

A Lexus-first, 235-horsepower,¹ 2.0-liter turbocharged direct-injection gasoline engine; aggressive exterior design including an iconic Lexus spindle grille, LED daytime running lights and optional 18-inch wheels²; available all-new Remote Touchpad³; and bold interior styling. Available all-wheel drive.

NX 200t F SPORT

Turbocharged performance, plus exclusive F SPORT features including an F SPORT-tuned suspension, bold front fascia with exclusive mesh grille, black exterior mirrors, G-force and turbo boost gauges, paddle shifters, machined-finish wheels and F SPORT seats with enhanced bolsters. Available all-wheel drive.

NX 300h

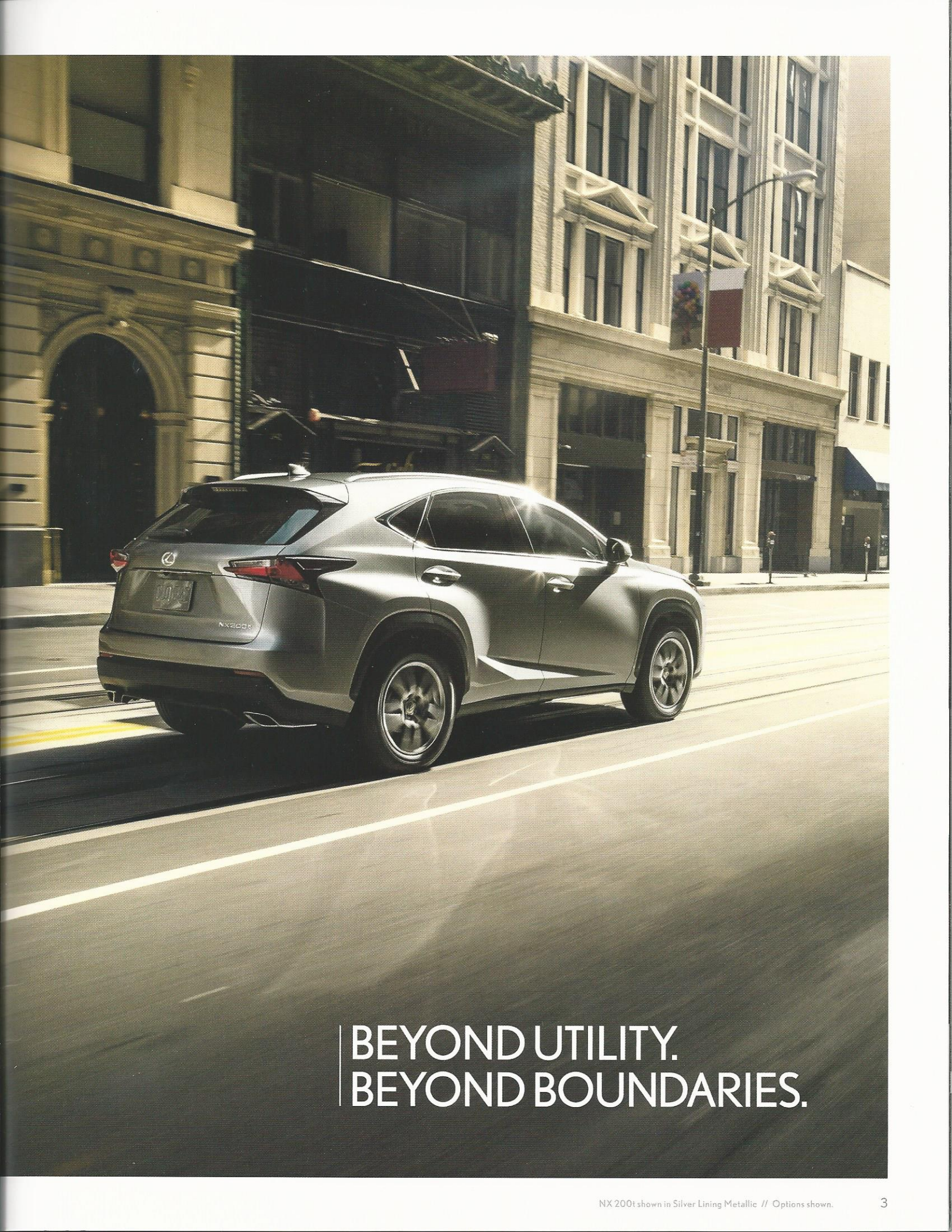
Lexus Hybrid Drive system with a 2.5-liter Atkinson-cycle engine, concealed exhaust tips, active damping control for superior ride comfort and handling response, and available Premium Triple-Beam LED headlamps. Available all-wheel drive.





INTRODUCING THE
FIRST-EVER 2015 NX





BEYOND UTILITY.
BEYOND BOUNDARIES.



NX 200t F SPORT

Going boldly like no crossover before it, the first-ever NX is ready to take on whatever urban adventure awaits. From the vigorous get-around-town performance to its striking stance, you'll find the NX at the intersection of high drivability and high design. And taking this performance and design to the next level, the NX 200t F SPORT features a more responsive sport-tuned suspension, an aggressive front fascia and exclusive details.





Don't stay within the lines. Make your own. Echoing the sculptural appeal of contemporary architecture, the faceted lines of the NX flow from exterior to interior, where you'll be connected to intuitive technologies and surrounded by purposeful design. And in the NX 200t F SPORT, you'll enjoy bold features such as enhanced bolstered front sport seats, contrast stitching and the added control of race-inspired paddle shifters.





HIGHLY COMPRESSED TO BE
HIGHLY RESPONSIVE.



THE NX 200t MAKES THE MOST
OUT OF EVERY CUBIC INCH OF ITS
2.0-LITER ENGINE. AND THEN SOME.
RELYING ON THE HIGHLY EVOLVED
TWIN-SCROLL TURBOCHARGER
TECHNOLOGY AND THE ABILITY TO
SEAMLESSLY MOVE BETWEEN
CONVENTIONAL AND ATKINSON
CYCLES, YOU'LL EXPERIENCE QUICK
ACCELERATION AND GREATER
EFFICIENCY AS YOU CRUISE
THROUGH TOWN.



Comfort knows no bounds in the NX. Whichever seat you're in, you'll enjoy the convenience of its five-door access and clever details found throughout the vehicle. Enjoy the expansive views offered by its available outer-sliding moonroof. Or take advantage of the ample legroom of its stadium-like rear seats that offer available first-in-class⁴ power-folding and reclining functionality. Either way, you'll find that the NX offers a whole new way to experience the everyday.





YOUR TOUCH
IS ITS COMMAND.

LEXUS ENFORM APP SUITE

VOICE COMMAND

UP-TO-DATE WEATHER AND TRAFFIC⁵

DINNER RESERVATIONS

PINCH-TO-ZOOM NAVIGATION

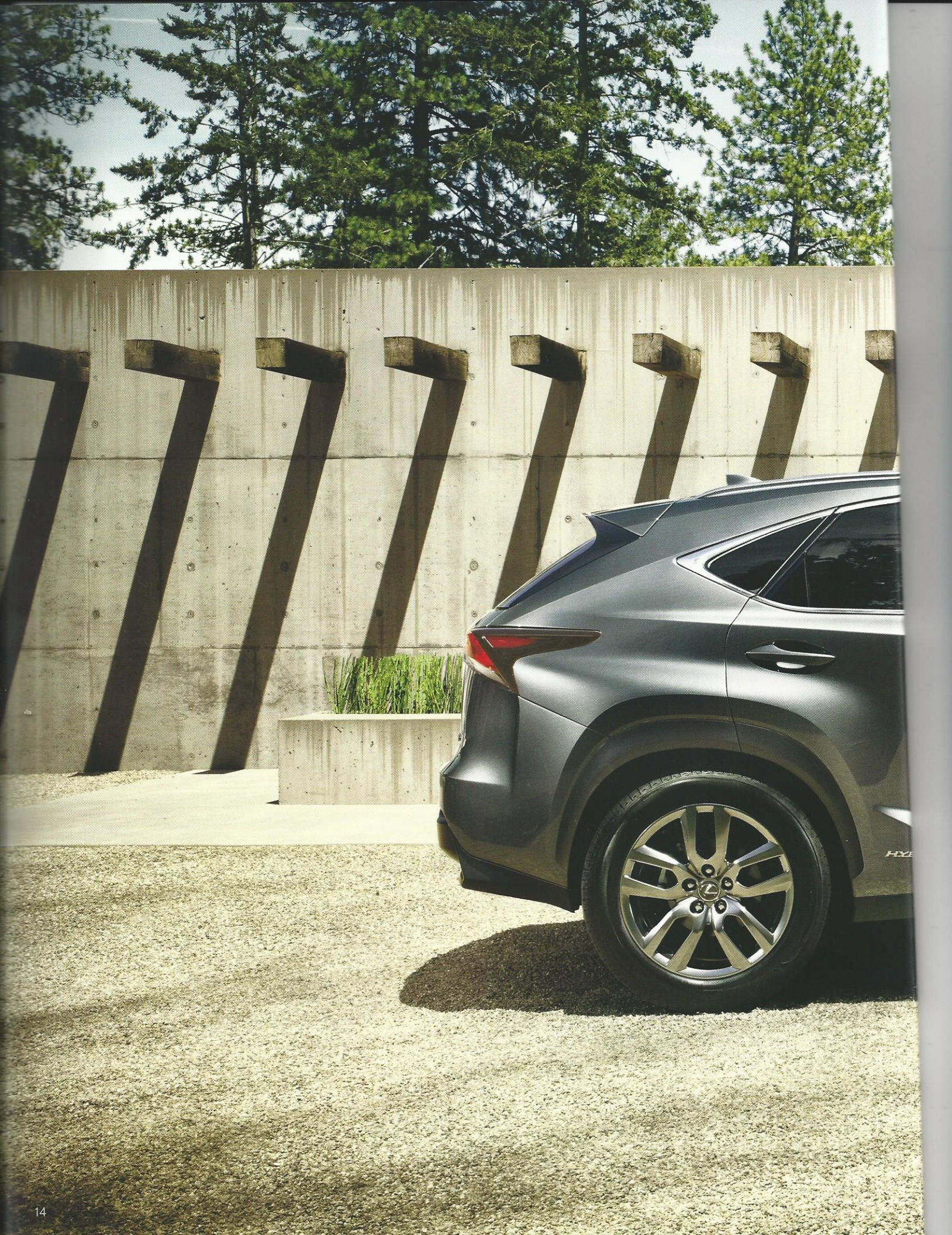
REAL-TIME FUEL ECONOMY

16+ MILLION POINTS OF INTEREST

BLUETOOTH[®] AUDIO^{6,7} AND PHONE

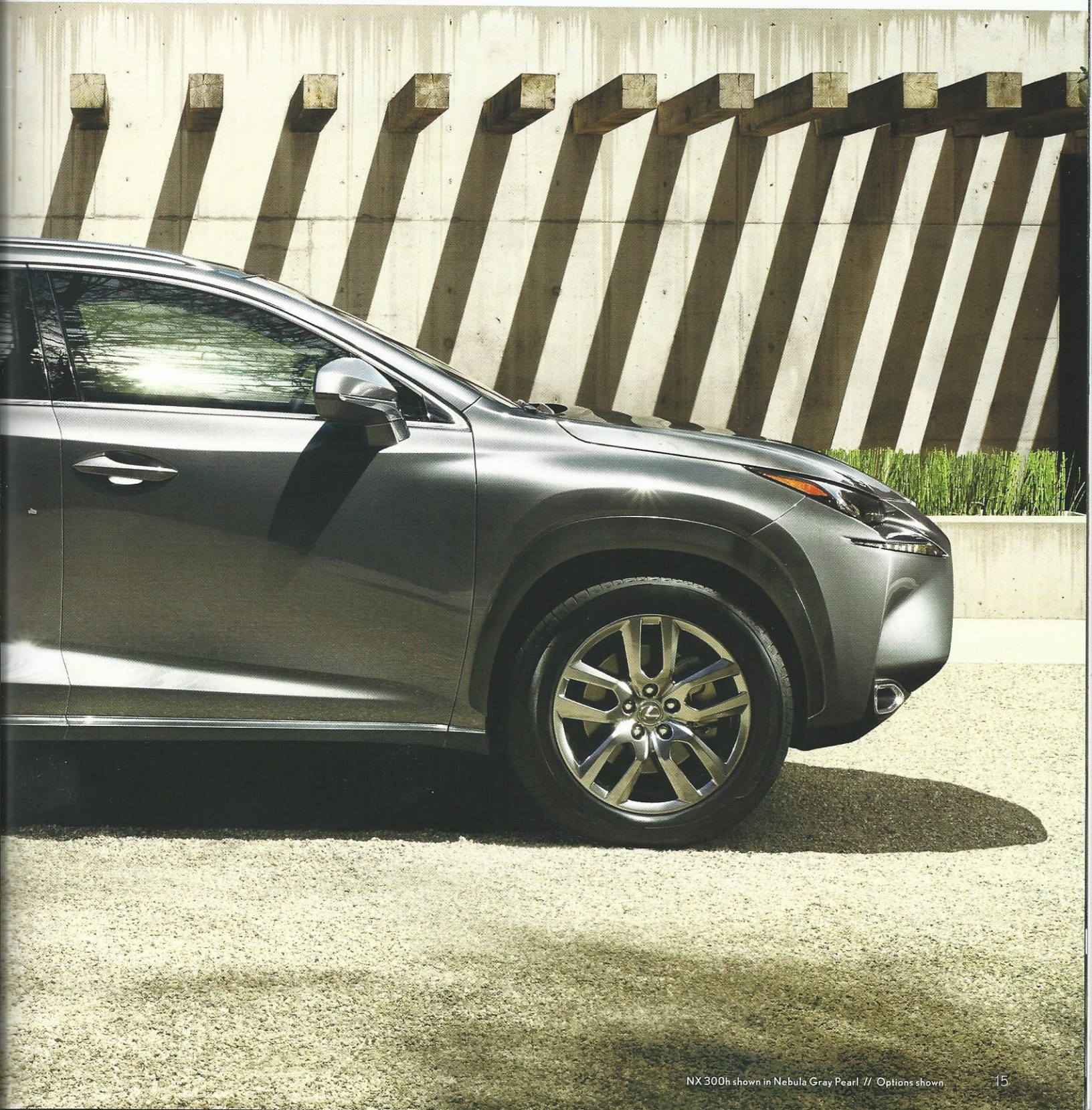
DUAL-ZONE CLIMATE CONTROL

BLENDING INNOVATION WITH INTUITION, THE ALL-NEW AVAILABLE REMOTE TOUCHPAD³ IS YOUR VIRTUAL ROAD MAP TO TOTAL CONTROL OVER THE NX. FEATURING AN AMPLE TOUCH SURFACE AREA AND UTILIZING SMARTPHONE-LIKE GESTURES SUCH AS SWIPE AND PINCH-TO-ZOOM, IT OFFERS EASY ACCESS TO MULTIMEDIA, CLIMATE CONTROL, DIRECTIONS AND MORE.



NX HYBRID

This is more than the promise of tomorrow. It's the solution for today. Building on the Lexus history of providing industry-leading eco-technologies, the NX 300h continues to raise the bar for the hybrid category. Featuring an available all-wheel drive system so innovative it can adapt to the angle or condition of the road, the NX 300h utilizes regenerative braking and other advancements that offer seamless hybrid efficiency and performance—all delivered in a breathtaking package.



SEE YOUR WAY THROUGH THE URBAN JUNGLE.



ADVANCED ILLUMINATION

See and be seen from nearly every angle with the sleek lighting found throughout the NX. The available Premium Triple-Beam LED headlamps are as functional as they are arresting. The unique door handle LEDs deliver a sophisticated entrance into the cockpit. And ensuring you get noticed whether you're coming or going, the rear LED combination lamps feature a high-contrast design and ultra-crisp turn-signal lamps.



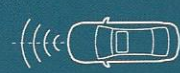
Qi-COMPATIBLE CHARGER

Don't let the hassle of cords slow you down. The advanced inductive technology of the all-new available Qi-compatible⁸ charger tray allows you to wirelessly charge your compatible smartphone or device. Conveniently located in the center console box—so that your personal technology stays within reach—the charger also features an indicator light to notify you when your device is fully charged.



DRIVE MODE SELECT

Drive Mode Select allows you to choose between up to four driving modes, each designed to match your need for responsiveness or efficiency. On the NX 300h, the EV mode⁹ operates on battery alone at low speeds and short distances, and eliminates emissions. ECO mode moderates throttle response and engine power for increased fuel efficiency. Craving more edge? Choose Sport mode for more dynamic throttle and steering response and, in the hybrid, maximized motor voltage.



VISIBILITY TECHNOLOGY

The available technologies in the NX let you navigate, back up and park in the city with ease. The available Dynamic Radar Cruise Control¹⁰ uses radar technology to sense the speed of vehicles in front of you, automatically reduce the throttle, and even apply the brakes, when necessary. And once you've arrived, the available Intuitive Parking Assist¹¹ makes traditional, parallel and even narrow parking a breeze.



LEXUS ENFORM REMOTE

In vehicles equipped with Navigation, the new available Lexus Enform Remote¹² mobile app can remotely start the engine, lock and unlock doors, check the status of doors and windows as well as your fuel level, and can help find your vehicle's location in a parking lot. And, should you loan your NX to another driver, you can receive instant alerts if, for example, a preset speed or mile limit is exceeded. Lexus Enform Remote¹² is complimentary for the first year of ownership.

Learn more at lexus.com/enform.



LEXUS ENFORM APP SUITE

The available subscription-free Lexus Enform App Suite¹³ uses your compatible smartphone to give you in-vehicle access to some of your favorite mobile applications. You can order movie tickets from the console, personalize your Pandora^{®14} playlist and even make dinner reservations.

Learn more at lexus.com/enform.



CARGO SPACE

Getting around is made all the more enjoyable when you consider the convenience delivered by the five-door access and up to 54.6 cubic feet of cargo space¹⁵ offered by its 60/40-split folding rear seat. So whether you're using the available power rear door to load your weekend getaway bag into the ample cargo area¹⁵ or strapping your gear to the available aluminum roof rails,^{16,17} the NX is the ideal companion for any adventure.



MULTI-INFORMATION DISPLAY

The full-color multi-information display within the gauge cluster allows you to quickly and easily read the data you need for optimum performance. In addition to basics like drive mode, currently selected gear and odometer information, the F SPORT model also gives you a view of exclusive performance data including a G-force and turbo-boost gauge. And this in-dash display offers multimedia linkage so that you can view incoming calls, current song titles and more.



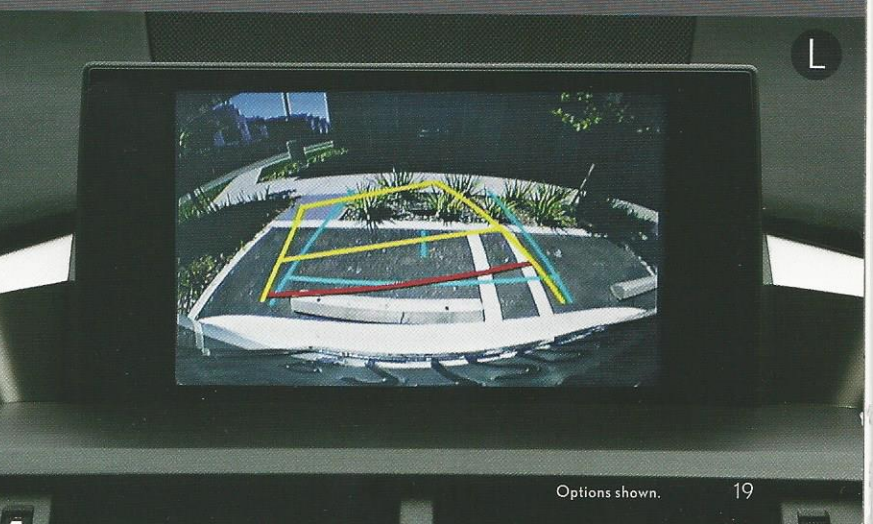


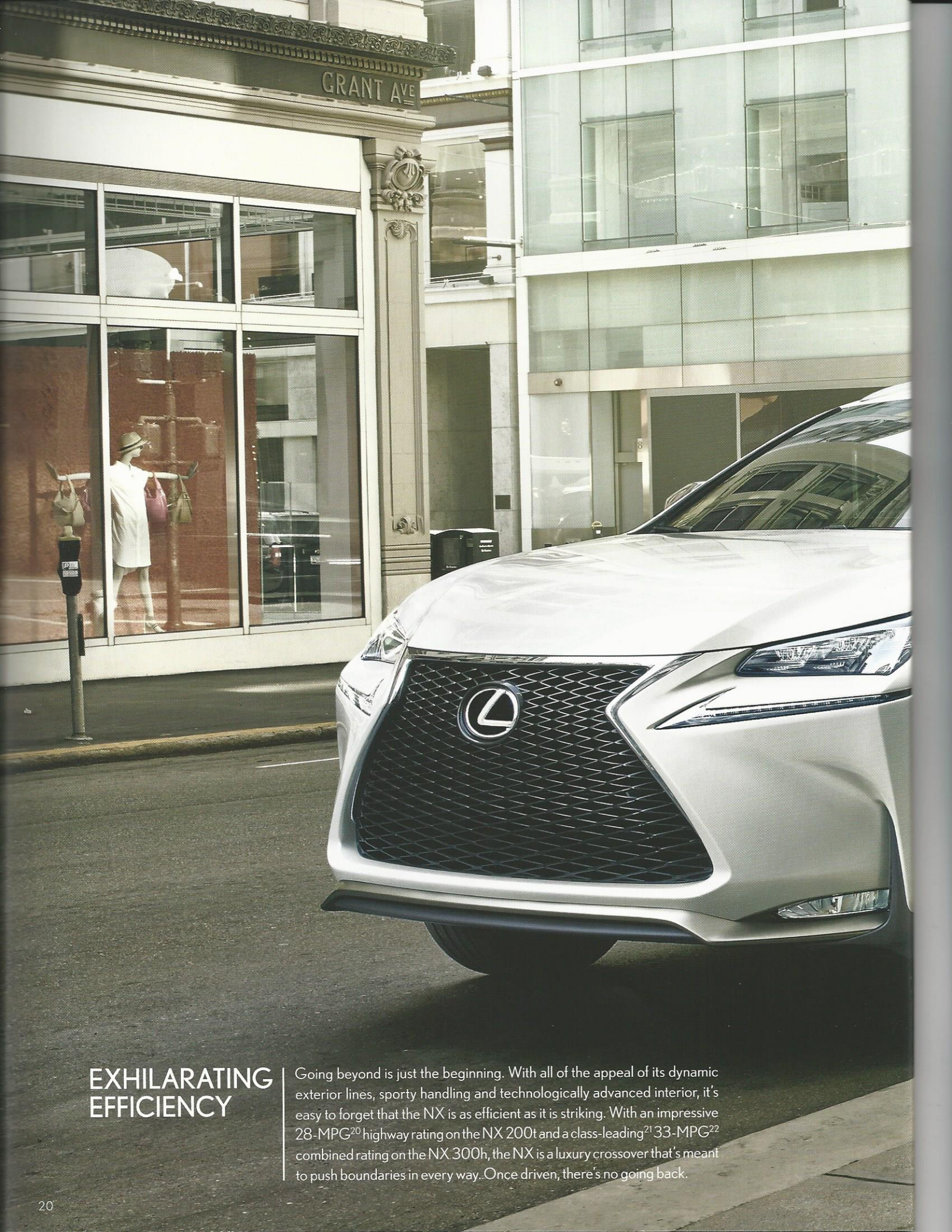
A. Available power-folding and reclining rear seats **B.** Available Lexus Enform with subscription-free App Suite **C.** Available F SPORT exclusive Rioja Red NuLuxe interior trim **D.** Full-color multi-information display with boost meter **E.** Available outer-sliding power moonroof **F.** LED-illuminated door handles





G. Available F SPORT Accessory¹⁹—in split-six-spoke forged alloy wheels.^{2,18} For a complete list of Genuine Lexus Accessories, visit lexus.com/NX/accessories **H.** Available Qi-compatible⁸ wireless device charger **I.** Center console sunglasses storage in available Flaxen NuLuxe interior trim **J.** Available F SPORT exclusive Rioja Red NuLuxe interior trim **K.** Drive Mode Select **L.** Backup camera¹⁹ with dynamic grid lines





EXHILARATING EFFICIENCY

Going beyond is just the beginning. With all of the appeal of its dynamic exterior lines, sporty handling and technologically advanced interior, it's easy to forget that the NX is as efficient as it is striking. With an impressive 28-MPG²⁰ highway rating on the NX 200t and a class-leading²¹ 33-MPG²² combined rating on the NX 300h, the NX is a luxury crossover that's meant to push boundaries in every way. Once driven, there's no going back.



KEY STANDARD FEATURES

SmartAccess^{23,24} with push-button Start/Stop // Dual-zone automatic climate control with interior air filter // Power windows with one-touch auto open/close // Remote-linked opening for windows // Power tilt-and-telescopic steering column (NXh) // Cruise control // Dark Umber interior trim // Leather-trimmed steering wheel and shift knob // Lexus Display Audio // 7.0-in color LCD display // Backup camera¹⁹ // Lexus eight-speaker Premium Sound System with Digital Sound Processor (DSP) // USB iPod^{®25}/iPhone^{®26} connectivity // Traffic and weather updates⁵ via HD Radio^{TM5} // Lexus Enform Safety Connect.²⁷ Subscription required. One-year trial subscription included

INDIVIDUAL OPTIONS

Heated front seats // Qi-compatible⁸ wireless device charger // Power-folding and reclining rear seatbacks // Power open/close rear door // Heated and ventilated front seats // Heated steering wheel // Premium Triple-Beam LED headlamps // Blind Spot Monitor²⁸ with Rear Cross-Traffic Alert²⁹ // Lane Departure Alert³⁰ // Intuitive Parking Assist¹¹ // Pre-Collision System (PCS)³¹ with Dynamic Radar Cruise Control¹⁰

PACKAGES

COMFORT PACKAGE (Standard on NX 300h)

Lexus Memory System to control power driver's seat, outside mirrors and steering column // Electrochromic (auto-dimming) inside mirror with compass (compass moved to multimedia display if equipped with Navigation Package) // Outside mirrors with auto tilt-down in reverse // Power tilt-and-telescopic steering column (NX200t) // HomeLink[®] universal transceiver to operate compatible garage, gate, home lighting and home security systems

PREMIUM PACKAGE

Heated and ventilated front seats (NX200t, NX300h) or heated front seats (NX200t FSPORT) // Electrochromic (auto-dimming) heated outside mirrors // Power moonroof // Enhanced LED daytime running lights (DRL) with integrated turn indicators // 18-in split-five-spoke alloy wheels and 225/60R18 all-season tires²

LUXURY PACKAGE

Linear Black Shadow wood (NX200t) interior trim // Perforated leather-trimmed interior // Rain-sensing wipers // Heated leather-trimmed steering wheel // Power open/close rear door // Towing capacity^{32,33} 2,000 lb (NX200t), 1,500 lb (NX300h AWD)

NAVIGATION PACKAGE

Navigation System // Remote Touchpad³ controller // Voice command // Enhanced Bluetooth technology⁶ // Compatible mobile-phone integration // Lexus Enform Remote¹² app and Lexus Enform Destinations. Subscriptions required. One-year trial subscription included // Lexus Enform App Suite¹³ with Bing,TM iHeartRadio, MovieTickets.com, OpenTable,[®] Pandora,¹⁴ Yelp[®] and Facebook Places // 10-speaker Lexus Premium Sound System with HD Radio⁵ // Additional USB port

NX 200t F SPORT

FSPORT-tuned suspension // Race-inspired paddle shifters // FSPORT front fascia and mesh grille insert // Aluminum pedals // FSPORT front fender and rear door badges // FSPORT perforated leather-trimmed steering wheel and shift knob // Metallic Sport interior trim // Black headliner // G-force and turbo boost gauge // FSPORT 18-in split-five-spoke alloy wheels with superchrome finish and 235/55R18 summer tires² or 18-in split-five-spoke alloy wheels with machined finish and 225/60R18 all-season tires²

WHEELS



17-in 10-spoke alloy wheels²
NX 200t/NX 300h



18-in split-five-spoke alloy wheels²
Available NX 200t/NX 300h



18-in split-five-spoke alloy wheels w/superchrome finish and summer tires²
NX 200t FSPORT



18-in split-five-spoke alloy wheels w/machined finish and all-season tires²
NX 200t FSPORT



FSPORT 19-in split-six-spoke forged alloy wheels^{2,18}
Available

KEY SPECS

235^{HP1}
NXt/NXt F SPORT

194^{TOTAL SYSTEM HP1}
NXh

0-60 IN 7.2^{S1,34} / 7.0^{S1,34} / 9.1^{S1,34}
NXt FWD / NXt F SPORT FWD NXt AWD / NXt F SPORT AWD NXh

2.0L TURBOCHARGED I-4 ENGINE

ATKINSON-CYCLE ENGINE + LEXUS HYBRID-DRIVE

PERFORMANCE

FWD OR AWD
STANDARD NXt / NXt F SPORT / NXh AVAILABLE NXt / NXt F SPORT / NXh

6-SPEED
NXt / NXt F SPORT

ECVT
NXh
ELECTRONICALLY CONTROLLED CONTINUOUSLY VARIABLE TRANSMISSION

DRIVETRAIN

AUTOMATIC TRANSMISSION

22 / 28 / 25²⁰ // 22 / 28 / 25²⁰ // 35 / 31 / 33²⁰ EST MPG
NXt FWD NXt F SPORT FWD NXh FWD

22 / 28 / 24²⁰ // 22 / 27 / 24²⁰ // 33 / 30 / 32²⁰ EST MPG
NXt AWD NXt F SPORT AWD NXh AWD

FUEL ECONOMY, EPA-ESTIMATED RATINGS (CITY/HIGHWAY/COMBINED)



HEIGHT
64.8 IN



WHEELBASE 104.7 IN

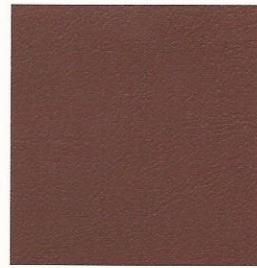
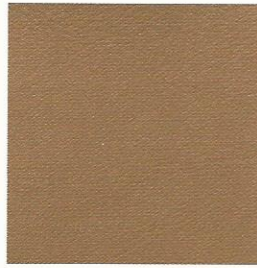
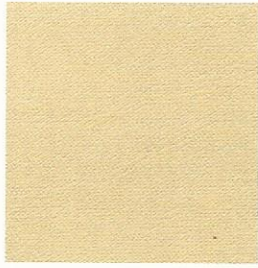
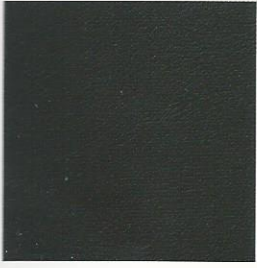
WIDTH 73.6 IN

OVERALL LENGTH 182.3 IN

NX 300h shown in Silver Lining Metallic // Options shown.

For a complete list of features and to view configurations available in your area, please visit lexus.com/NXbuild.

INTERIOR



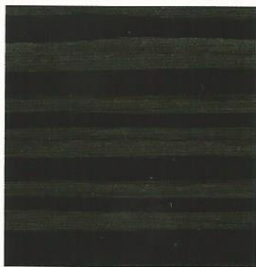
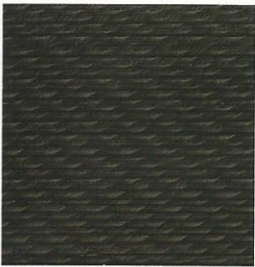
BLACK
LEATHER* or NULUXE

CRÈME
LEATHER* or NULUXE

FLAXEN
NULUXE

RIOJA RED†
NULUXE

TRIM



DARK UMBER

LINEAR BLACK
SHADOW WOOD

METALLIC SPORT†

LEATHER or NULUXE INTERIOR	EXTERIOR	Eminent White Pearl	Nebula Gray Pearl	Silver Lining Metallic	Obsidian	Atomic Silver	Matador Red Mica	Fire Agate Pearl	Meteor Blue Mica	Ultrasonic Blue Mica†	TRIM	Dark Umber	Linear Black Shadow Wood	Metallic Sport†
Black*		■●▲	■●▲	■●▲	■●▲	■●▲	■●▲	■●	■●	▲		■●	■●	▲
Crème*		■●	■●	■●	■●	■●	■●	■●	■●			■●	■●	
Flaxen		■●	■●	■●	■●	■●	■●	■●	■●			●	●	
Rioja Red†		▲	▲	▲	▲	▲				▲				▲

■ NX 200t

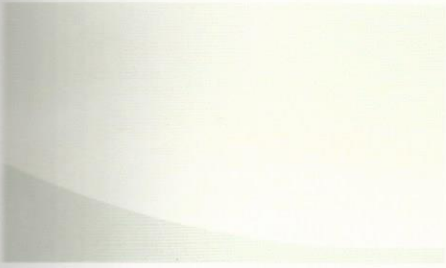
● NX 300h

▲ NX 200t FSPORT

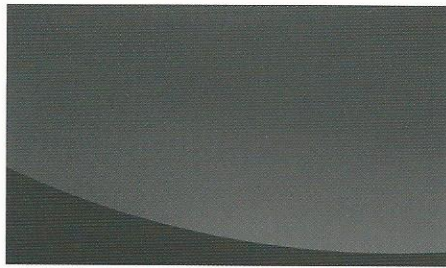
* Leather trim is available

† FSPORT exclusive

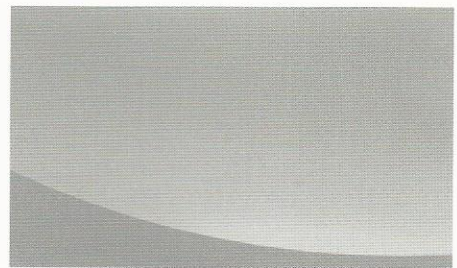
EXTERIOR



EMINENT WHITE PEARL



NEBULA GRAY PEARL



SILVER LINING METALLIC



OBSIDIAN



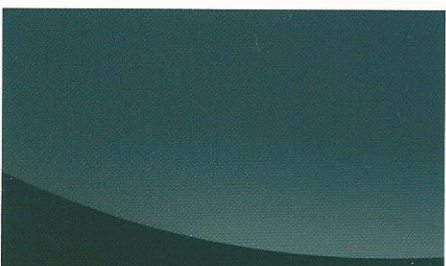
ATOMIC SILVER



MATADOR RED MICA



FIRE AGATE PEARL



METEOR BLUE MICA



ULTRASONIC BLUE MICA+

SERVICES AS INNOVATIVE AS THE NX ITSELF.

THE LEXUS DELIVERY AND TECHNOLOGY SPECIALISTS. To assist you in getting the most out of your NX, the Lexus Delivery Specialist will conduct a personalized delivery focused on every feature, setting and function you desire. To answer questions that arise after delivery, the Lexus Technology Specialist can offer expert guidance in person or without you ever leaving the driveway, via camera-enabled iPad^{®26} apps like FaceTime.^{®35} Learn more about our Lexus Delivery and Technology Specialist services at lexus.com/specialists.

WARRANTY Four-year/50,000-mile Lexus Limited Warranty. Eight-year/100,000-mile Hybrid System Warranty. Six-year/70,000-mile Powertrain Warranty. Six-year/unlimited-mileage Corrosion Perforation Warranty. All warranties with zero deductible. See the *NX Warranty and Services Guide* at your Lexus dealer for details. **DISCLOSURES** 1. Ratings achieved using the required premium unleaded gasoline with an octane rating of 91 or higher. If premium fuel is not used, performance will decrease. 2. 17-, 18- or 19-in performance tires are expected to experience greater tire wear than conventional tires. Tire life may be substantially less than 20,000 miles (17-in) or 15,000 miles (18-in or 19-in), depending upon driving conditions. 3. Be sure to obey traffic regulations and maintain awareness of road and traffic conditions. 4. Based on Entry Level Crossover segment. 5. HD Radio[™] Technology manufactured under license from iBiquity Digital Corporation U.S. and Foreign Patents. HD Radio[™] and the HD, HD Radio, and "Arc" logos are proprietary trademarks of iBiquity Digital Corp. 6. The Bluetooth[®] word mark and logos are registered trademarks owned by Bluetooth SIG, Inc. and any use of such marks by Lexus is under license. A compatible Bluetooth-enabled phone must first be paired. Phone performance depends on software, coverage & carrier. 7. Bluetooth[®] audio device must be enabled with A2DP and AVRCP. 8. Qi wireless charging may not be compatible with all mobile phones, MP3/WMA players and like models. 9. CAUTION! When driving a hybrid vehicle, pay special attention to the area around the vehicle. Because there is little vehicle noise in electric-only mode, EV mode works under certain conditions at low speeds for up to a mile. See *Owner's Manual*. 10. Dynamic Radar Cruise Control is designed to assist the driver and is not a substitute for safe and attentive driving practices. See *Owner's Manual* for details. 11. Do not rely exclusively on the Intuitive Parking Assist system. Always look over your shoulder and use your mirrors to confirm clearance. System effectiveness depends on many factors. See *Owner's Manual* for details. 12. Use only if aware of circumstances surrounding the vehicle, and it is legal & safe to do so (e.g., car uncovered in open area, no people or pets in or nearby). If vehicle has not been driven for over a week, services will not be available until next time vehicle is started. Functionality depends on many factors, such as vehicle and smartphone connectivity. See usage precautions, service limitations & *Owner's Manual*. Data charges may apply. Registration, app download are required. Must have active Safety Connect subscription. Annual fee required after 1-year trial. 13. Be sure to obey traffic regulations and maintain awareness of road and traffic conditions at all times. Apps/services vary by phone/carrier; functionality depends on many factors. Select apps use large amounts of data; you are responsible for charges. Apps & services subject to change. See lexus.com/enform for details. 14. PANDORA[®], the PANDORA[®] logo, and the Pandora trade dress are trademarks or registered trademarks of Pandora Media, Inc., used with permission. 15. Cargo and load capacity limited by weight and distribution. 16. Roof rack with rails not recommended for luggage. 17. Roof rack capacity is limited. See *Owner's Manual* for details. 18. F SPORT Accessories are warranted for 12 months from the date of installation or for the balance of the new-car or Certified Pre-Owned (CPO) warranty in force at the date of installation, whichever is greater, when installed by an authorized Lexus dealer. F SPORT Accessories installed by anyone other than an authorized Lexus dealer are warranted for 12 months from the date of purchase only, and the warranty coverage is limited to the replacement value of the F SPORT Accessories. These warranties do not cover maintenance services such as replacement of brake pads/linings and clutch linings or noise, vibration, cosmetic conditions and other deterioration caused by normal wear and tear. Part failure caused by improper installation by anyone other than an authorized Lexus dealer may void the F SPORT Accessories warranty, the new-vehicle warranty or both. F SPORT is a trademark of Toyota Motor Corporation. Products available through participating Lexus dealers. 19. The backup camera does not provide a comprehensive view of the rear area of the vehicle. You should also look around outside your vehicle and use your mirrors to confirm rearward clearance. Cold weather may limit effectiveness and view may become cloudy. 20. 2015 EPA-estimated ratings. Actual mileage will vary. 21. Based on 2015 EPA-estimated fuel economy. 22. 2015 NX 300h (FWD) EPA 35/31/33 city/hwy/combined mpg ratings. Actual mileage will vary. 23. The SmartAccess system may interfere with some pacemakers or cardiac defibrillators. If you have one of these medical devices, please talk to your doctor to see if you should deactivate this system. 24. The engine immobilizer is a state-of-the-art anti-theft system. When you insert your key into the ignition switch or bring a SmartAccess fob into the vehicle, the key transmits an electronic code to the vehicle. The engine will only start if the code in the transponder chip inside the key/fob matches the code in the vehicle's immobilizer. Because the transponder chip is embedded in the key/fob, it can be costly to replace. If you lose a key or fob, your Lexus dealer can help. Alternatively, you can find a qualified independent locksmith to perform high-security key services by consulting your local Yellow Pages or by contacting www.alo.org. 25. iPod[®] is a registered trademark of Apple Inc. All rights reserved. 26. iPhone[®] and iPad[®] are registered trademarks of Apple Inc. All rights reserved. 27. Contact with the response center may not be available in all areas. Service Agreements required. A variety of subscription terms available; charges will vary. See lexus.com for details. 28. Do not rely exclusively on the Blind Spot Monitor. Always look over your shoulder and use your turn signal. There are limitations to the function, detection, range and clarity of the system. To learn more, see *Owner's Manual*. 29. Do not rely exclusively on the Rear Cross-Traffic Alert system. Always look over your shoulder and use your mirrors to confirm rear clearance. There are limitations to the function, detection, range and clarity of the system. To learn more, see *Owner's Manual*. 30. Lane Departure Alert is designed to read lane markers under certain conditions and provide visual and audible alerts when lane departure is detected. It is not a collision-avoidance system or a substitute for safe and attentive driving. Effectiveness depends on many factors, such as speed, driver input and road conditions. See *Owner's Manual* for further information. 31. The Pre-Collision System is designed to help reduce the crash speed and damage in certain frontal collisions only. It is not a collision-avoidance system and is not a substitute for safe and attentive driving. System effectiveness depends on many factors, such as speed, driver input and road conditions. See *Owner's Manual* for towing and load specifications. 32. Please consult your Lexus dealer or *Owner's Manual* for towing and load specifications. 33. Before towing, confirm your vehicle and trailer are compatible, hooked up and loaded properly and that you have any necessary additional equipment. Do not exceed any Weight Ratings and follow all instructions in your *Owner's Manual*. The maximum you can tow depends on the total weight of any cargo, occupants and available equipment. Calculated with the new SAE J2807 method. 34. Performance figures are for comparison only and were obtained with prototype vehicles by professional drivers using special safety equipment and procedures. Do not attempt. 35. FaceTime[®] is a registered trademark of Apple Inc. All rights reserved.

Lexus strives to build vehicles to match customer interest, and thus they typically are built with popular options and option packages. Not all options/packages are available separately, and some may not be available in all regions of the country. See lexus.com for information about options/packages commonly available in your area. If you would prefer a vehicle without any or with different options, contact your dealer to check for current availability or the possibility of placing a special order. Specifications, features, equipment, technical data, performance figures, options, and color and trim are based upon information available at time of publishing, are subject to change without notice, and are for mainland U.S.A. vehicles only. Some vehicles shown with available equipment. See your Lexus dealer for details. Lexus reminds you to wear seatbelts, secure children in rear seat, obey all traffic laws and drive responsibly. For more information, call 800-USA-LEXUS (872-5398) or visit lexus.com. To learn more about your financing options, contact your Lexus dealer or call Lexus Financial Services at 800-874-7050.

